

1WebDesign DIY Websites

Creating and Editing Website Structure

A website consists of several pages linked together in an organized way to present information in an ordered way. Using SiteBuilder, you can arrange the pages in two levels of hierarchy - top-level pages and second-level pages. Therefore, you must clearly understand how you intend to structure your website.

You can add three types of pages to your website:

- **HTML pages** use only HTML (HyperText Markup Language) code to present information.
- **Photo gallery pages** provide a convenient way to store and organize your pictures on the website (this type is optional; it depends on your business plan)
- **Shop pages** offer website visitors an opportunity to purchase your products online (this type is optional, it depends on your business plan).

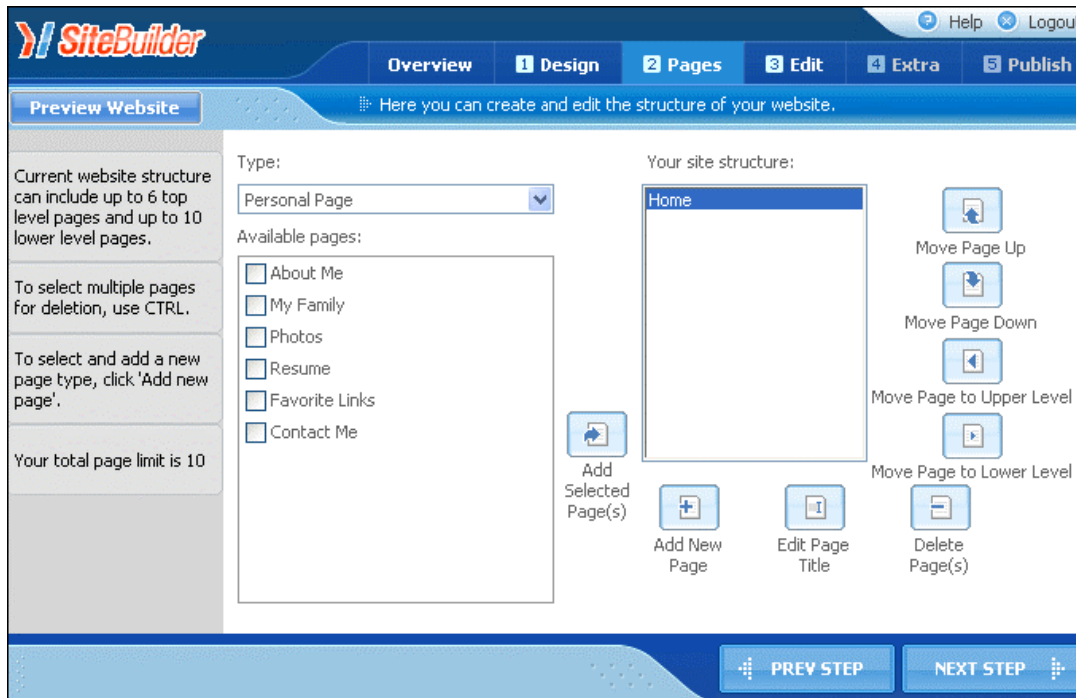
Note: The maximum number of top-level and second-level pages you can create using SiteBuilder is 60 (6 top-level pages and 10 second-level pages). This is the limit of the SiteBuilder application. In addition, the total number of pages you can add is also limited by the business plan defined either by the SiteBuilder Administrator or a Reseller. In the figure below, the maximum number of pages allowed by the business plan is 10 (see this message in the navigation pane on the **Pages** page). If you want to add more pages than allowed by your plan, please contact the SiteBuilder Administrator or Reseller.

To facilitate working with SiteBuilder, HTML pages are grouped as pre-defined sets of pages, which are different for various types of websites (business, personal, or other). Depending on the purpose and functionality of your future website, you can use a ready-to-use page set and modify it to adjust the structure of your website to your needs.

To edit a website structure, click the **Pages** tab. The **Pages** page opens.

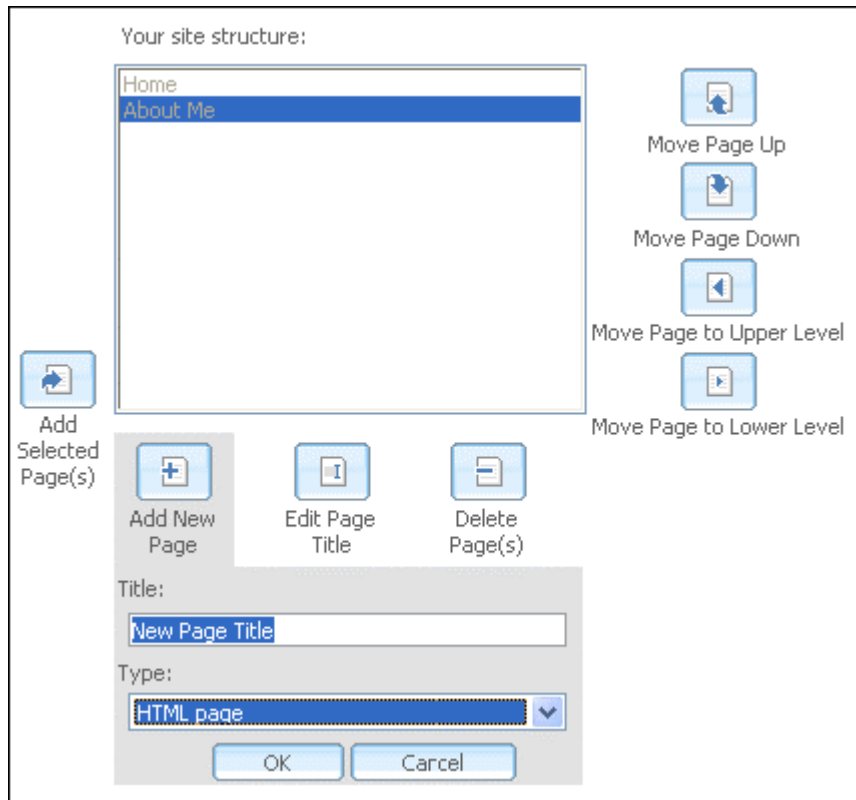
1WebDesign

WEBSITE www.1webdesign.com.au
EMAIL info@1webdesign.com.au



To add pages to your website and organize them in a hierarchical structure

1. Select a type of your future website from the **Type** list. A set of pages for the selected type appears in the **Available pages** box.
2. From the **Available pages** box, choose the pages that you want to add to your website by selecting the corresponding check boxes.
3. Click **Add Selected Page(s)** to add the selected pages to your website structure.
4. Edit your website structure using the buttons next to the **Your site structure** box.
 - o To add a new page to the website structure, click **Add New Page**. An additional screen appears (in the following picture this screen is gray). Select the type of the page (HTML page, Photogallery page, or Shop page) from the **Type** list and type the title for the new page in the **Title** field.



- To edit a page title, select the page in the **Available pages** box, click **Edit Page Title**, and type the new name in the **Title** field.
 - To delete a page, select it in the **Your site structure** box and click **Delete Page(s)**.
 - To move a page up or down at the same level, select it in the **Your site structure** box and click **Move Page Up** or **Move Page Down** respectively.
 - To move a page from the second level to the top level, select it in the **Your site structure** box and click **Move Page to Upper Level**.
 - To move a page from the top level to the second level in the structure, select it in the **Your site structure** box and click **Move Page to Lower Level**. Pages at the second level are marked with "..." before their titles.
5. To preview the current version of your website, click **Preview Website** in the top left corner of the window.

Note: You can preview the website at any stage of its creation.

When you finish working with the website structure, click the **Edit** tab. You will be asked to save changes to the website structure. Click **OK** to move to the **Edit** tab.